



SMART CDR

Increase Reliability With Premium Shaft Grounding

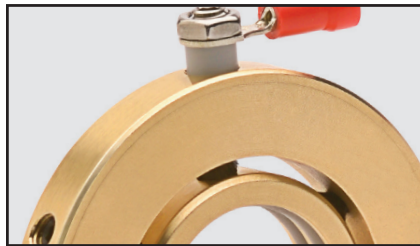
Protect bearings from stray shaft currents and improve the reliability of VFD-driven equipment with the Smart CDR shaft grounding solution, the next-generation of shaft grounding technology from Inpro/Seal®.

The Smart CDR protects bearings from shaft currents by providing a low impedance path to ground, diverting stray currents safely away from the bearings. Proprietary conductive filaments are coupled with a bearing-bronze sleeve to achieve premium shaft grounding performance and extended equipment life.

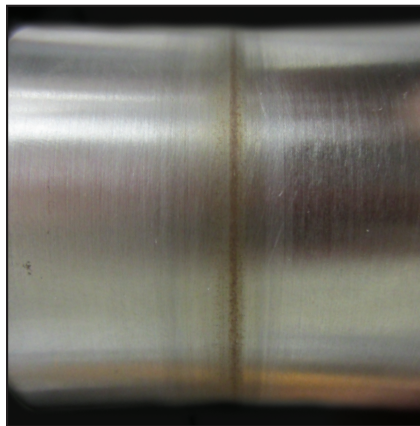
The innovative sleeve provides a consistent contact surface for the conductive filaments, making the Smart CDR less susceptible to grounding ineffectiveness caused by shaft conditions, contamination or oxidation. This unique design eliminates the time-consuming and costly maintenance associated with other grounding rings.

When carbon filaments and the shaft are in direct contact, as in most grounding ring designs, conduction inhibiting oxidation forms on the shaft, reducing the grounding ring's effectiveness over time. The application of silver coatings or other maintenance to the shaft are required at regular intervals to maintain performance. The bronze shaft sleeve of the Smart CDR eliminates this oxidation permanently, requiring no ongoing maintenance.

In addition, the Smart CDR allows for instant verification of shaft grounding performance with the exclusive Inpro/Seal Smart Ground Monitor.



The Smart CDR's shaft sleeve, conductive fibers and Smart terminal provides premium shaft grounding performance.



Conduction inhibiting corrosion on a motor's shaft.

ADVANTAGES

The Inpro/Seal Smart CDR:

- Uses proven CDR technology to safely divert harmful shaft currents away from the bearings to ground
- Utilizes a conductive shaft sleeve to maintain performance and eliminate shaft oxidation
- Connects to the Smart Ground Monitor for condition monitoring
- Can be installed with a range of mounting configurations, including clip-on, epoxy, bolt-through, side-mount and flexbracket

