

APPLICATION SOLUTIONS: **SMART™ CDR®**

INCREASE RELIABILITY WITH PREMIUM SHAFT GROUNDING

Protect bearings from stray shaft currents and improve the reliability of VFD-driven equipment with the Smart CDR shaft grounding solution, the next-generation of shaft grounding technology from Inpro/Seal®.

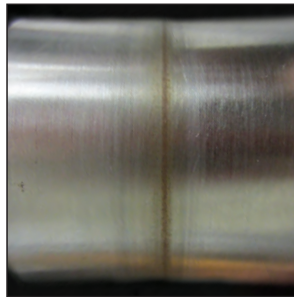


The Smart CDR's shaft sleeve, conductive fibers and Smart terminal provides premium shaft grounding performance.

The Smart CDR protects bearings from shaft currents by providing a low impedance path to ground, diverting stray currents safely away from the bearings. Proprietary conductive filaments are coupled with a bearing-bronze sleeve to achieve premium shaft grounding performance and extended equipment life.

The innovative sleeve provides a consistent contact surface for the conductive filaments, making the Smart CDR less susceptible to grounding ineffectiveness caused by shaft conditions, contamination or oxidation. This unique design eliminates the time-consuming and costly maintenance associated with other grounding rings.

When carbon filaments and the shaft are in direct contact, as in most grounding ring designs, conduction inhibiting oxidation forms on the shaft, reducing the grounding ring's effectiveness over time. The application of silver coatings or other maintenance to the shaft are required at regular intervals to maintain performance. The bronze shaft sleeve of the Smart CDR eliminates this oxidation permanently, requiring no ongoing maintenance.



Conduction inhibiting corrosion on a motor's shaft.

In addition, the Smart CDR allows for instant verification of shaft grounding performance with the exclusive Inpro/Seal Smart Ground Monitor.

SMART™ CDR

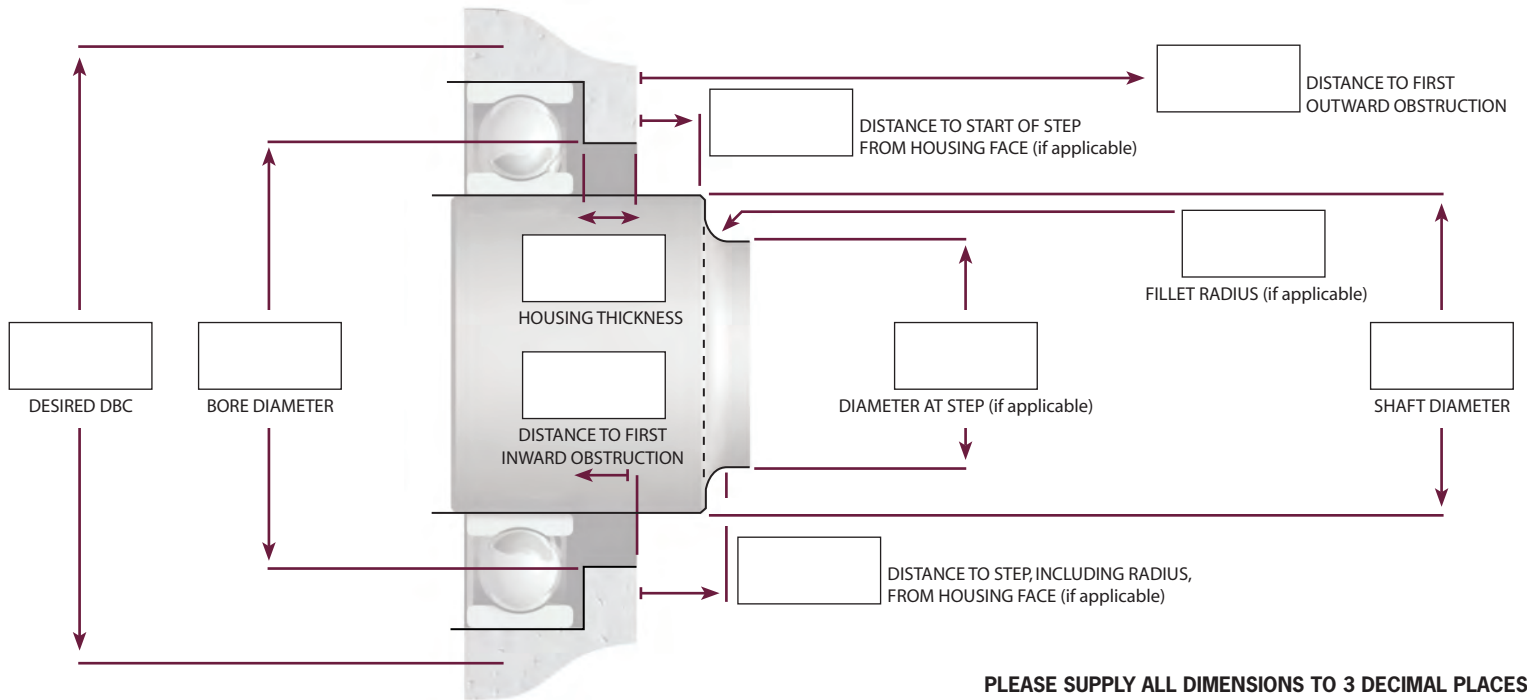
FACTS AT A GLANCE

The Inpro/Seal® Smart™ CDR®:

- Uses proven CDR technology to safely divert harmful shaft currents away from the bearings to ground
- Utilizes a conductive shaft sleeve to maintain performance and eliminate shaft oxidation
- Connects to the Smart Ground Monitor for condition monitoring
- Can be installed with a range of mounting configurations, including clip-on, epoxy, bolt-through, side-mount and flexbracket



SMART™ CDR® REQUEST FOR QUOTE



PLEASE SUPPLY ALL DIMENSIONS TO 3 DECIMAL PLACES

Data Needed For Quote

SMART CDR INFO

APPLICATION: Motor- Frame Size _____ HP _____

Other _____

DRIVE TYPE: N/A Mains VFD **VOLTAGE:** _____

EXISTING GROUNDING DEVICE: _____ None

SHAFT POSITION: Horizontal Vertical Up Vertical Down

BEARING TYPE: Drive End (DE)- Ball Sleeve Roller Insulated

Opposite Drive End (ODE)- Ball Sleeve Roller Insulated

PLANNED CDR LOCATION: ODE DE Both

MOUNTING: Clip-On Epoxy Bolt-Through

Side-Mount Flexbracket

LUBE: Oil (level) _____ Grease Oil Mist Forced Oil System

FIRST OBSTRUCTION: Outward Inward Step On Shaft

SHAFT SPEED: _____

TEMPERATURE AT RING: °C | °F Min _____ Max _____

ENVIRONMENT: _____

RING TYPE: Solid Split

CONSTRUCTION MATERIAL: Bronze Other _____

TOTAL PIECES OF EQUIPMENT: _____

CONTACT FOR QUESTIONS: _____

SMART GROUND MONITOR™ INFO

IS 24 VDC AVAILABLE? Y N

DO YOU REQUIRE A CABLE KIT? Y N

Cable Kit includes:

30.5 m (100 ft) 2 Core Wire (connect to Smart CDR)

30.5 m (100 ft) 4 Core Wire (connect power/communication)

IP67 Wire Connector and Assembly

BRIEFLY DESCRIBE THE APPLICATION

Fax RFQ sheet to 309-787-6114 or email info@inpro-seal.com



INPRO/SEAL®
A Waukesha Bearings Business

EXPERT ENGINEERING. PROVEN RESULTS.®

d12.015.1-SE15 | f15.016.1-SE15